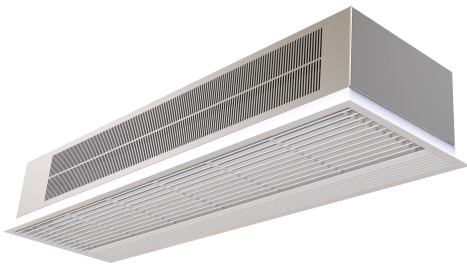




Caracteristici



- Galvaniseeritud terasplaadist valmistatud isekandev konstruktsioon, on ripplakke sisseehitamiseks valmis.
- It has both internal and external fixings. Electrical and electronic connections inside.
- Sisselaskevõre (hooldusvaba) on tehtud koos alumiiniumprofiilidega ja väljapuhumisotsikuga ning asetatud valge RAL 9016 korpusele. Muud värvid on ka saadaval (soovi korral).
- Anodeeritud alumiiniumist väljalaskeavad, aerodünaamilise vormiga.
- 2-kiiruselise rootormootoriga juhitud ristvooluventilaatorid, madal müratase.
- "P" type with water heated coil and integrated regulation for ON/OFF or three stages 0-10V proportional valve. "E" tüüp elektriliste varjestatud elementidega, kolm astmed, sisseehitatud reguleerimisvõimalusega. "A" tüüp küttega, ainult ventileerimiseks.
- Advanced Plug&Play control. Includes: Advanced PRO control with LCD display and integrated thermostat, door contact, 7m and remote control. With integrated functions: door delay (configurable); interface mode; operation, alarm and maintenance warning signals; and multiple digital inputs that modify the air curtain's operation.
- Includes protective varnish for the electronic board and control.
- Optional:
  - Auxiliary temperature sensors that improve air curtain control and increase energy savings.
  - Clever PRO intelligent control (automatic, programmable, ModBus via PLC, timer, etc.) with an additional temperature sensor.

Specificații

50Hz

Model	(m³/h)	(m)
RA 1000 A	2,5-3,5	
RA 1500 A	2,5-3,5	
RA 2000 A	2,5-3,5	

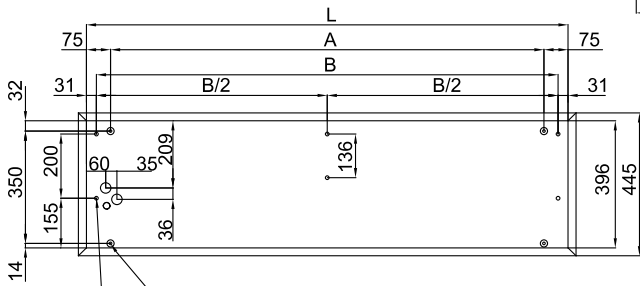
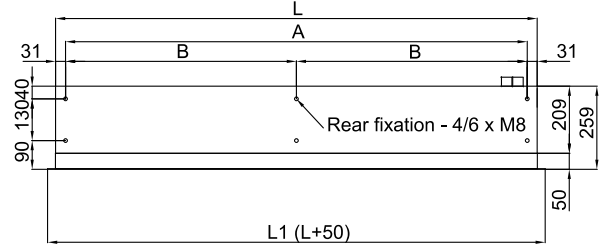
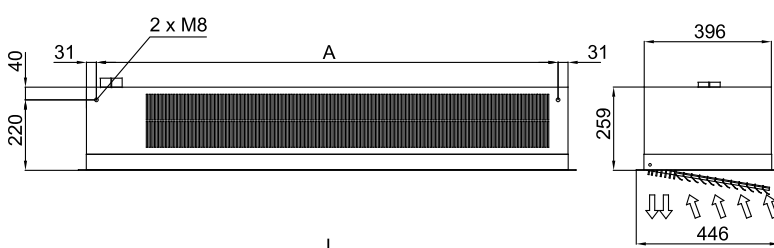
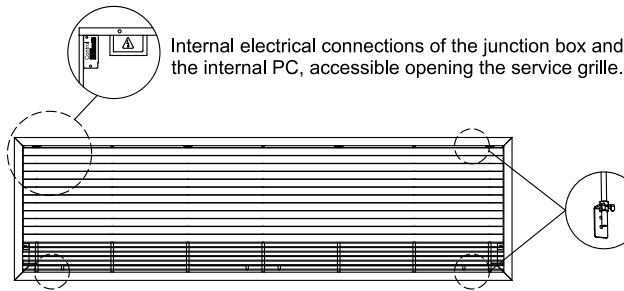
Model	(m³/h)	(kW)	(m)
RA 1000 E	2,5-3,5		
RA 1500 E	2,5-3,5		
RA 2000 E	2,5-3,5		

Model	(m³/h)	(kW)	(kW)	(m)
RA 1000 P86	2,5-3,5			
RA 1500 P86	2,5-3,5			
RA 2000 P86	2,5-3,5			
RA 1000 P64	2,5-3,5			
RA 1500 P64	2,5-3,5			
RA 2000 P64	2,5-3,5			

60Hz

Model	(m³/h)	(m)
RA 1000 A 60Hz	2,5-3,5	
RA 1500 A 60Hz	2,5-3,5	
RA 2000 A 60Hz	2,5-3,5	

Dimensiuni



	L	L1	A	B	B/2
RA 1000 A, P, E	1000	1050	850	938	-
RA 1500 A, P, E	1500	1550	1350	1438	-
RA 2000 A, P, E	2000	2050	1850	1938	969

Hanging fixation 1 (by default) - 4 x M8 Through-holes for routing the fasteners to the interior.  
 Hanging fixation 2 (optional) - 4/6 x M8 Holes for external fastening.